



Noise Monitoring Result

Day Time (0700 - 1900hrs on normal weekdays)

Location: M1a - Harbour Road Sports Centre

Date	Time	Weather	Measurement Noise Level			Baseline Level	Construction Noise Level	Limit Level
			Leq	L10	L90	Leq	Leq	Leq
Unit: dB(A), (30-min)								
27/2/2017	10:10	Fine	76.8	80.0	73.0	72	75	75
7/3/2017	10:40	Fine	77.1	78.5	72.5	72	75	75
13/3/2017	10:15	Cloudy	76.4	78.5	72.0	72	74	75
20/3/2017	11:00	Fine	76.5	77.9	73.5	72	74	75

Location: M2b - Noon-day gun area

Date	Time	Weather	Measurement Noise Level			Baseline Level	Construction Noise Level	Limit Level
			Leq	L10	L90	Leq	Leq	Leq
Unit: dB(A), (30-min)								
27/2/2017	10:53	Fine	67.0	69.0	65.5	68	67	75
7/3/2017	11:30	Fine	71.0	73.5	67.5	68	68	75
13/3/2017	11:15	Cloudy	68.8	70.0	67.0	68	63	75
21/3/2017	14:00	Fine	68.2	69.5	65.0	68	59	75

Location: M3a - Tung Lo Wan Fire Station

Date	Time	Weather	Measurement Noise Level			Baseline Level	Construction Noise Level	Limit Level
			Leq	L10	L90	Leq	Leq	Leq
Unit: dB(A), (30-min)								
28/2/2017	10:22	Cloudy	67.5	69.5	64.0	69	68	75
7/3/2017	13:30	Fine	67.5	68.2	64.5	69	68	75
14/3/2017	13:45	Cloudy	67.1	68.5	65.0	69	67	75
21/3/2017	14:40	Fine	67.0	69.0	62.4	69	67	75

Location: M4b - Victoria Centre

Date	Time	Weather	Measurement Noise Level			Baseline Noise Level	Construction Noise Level	Limit Level
			Leq	L10	L90	Leq	Leq	Leq
Unit: dB(A), (30min)								
28/2/2017	11:00	Cloudy	64.4	65.5	61.0	67	64	75
7/3/2017	14:12	Fine	65.5	67.0	63.0	67	66	75
14/3/2017	14:20	Cloudy	65.6	67.0	63.5	67	66	75
21/3/2017	15:18	Fine	64.5	65.5	62.5	67	65	75

Location: M5b - City Garden

Date	Time	Weather	Measurement Noise Level			Baseline Level	Construction Noise Level	Limit Level
			Leq	L10	L90	Leq	Leq	Leq
Unit: dB(A), (30min)								
28/2/2017	13:00	Cloudy	67.6	69.5	64.5	68	68	75
7/3/2017	14:55	Fine	67.9	69.5	65.0	68	68	75
14/3/2017	15:30	Cloudy	76.0	77.0	71.5	68	75	75
21/3/2017	16:00	Fine	71.3	72.0	66.5	68	69	75

Location: M6 - HK Baptist Church Henrietta Secondary School

Date	Time	Weather	Measurement Noise Level			Baseline Level	Construction Noise Level	Limit Level
			Leq	L10	L90	Leq	Leq	Leq
Unit: dB(A), (30-min)								
28/2/2017	13:40	Cloudy	69.4	72.0	63.5	71	69	70
7/3/2017	15:33	Fine	71.9	73.0	70.0	71	66	70
14/3/2017	16:06	Cloudy	71.2	72.5	68.0	71	62	70
21/3/2017	16:35	Fine	71.0	72.5	68.5	71	59	70



Noise Monitoring Result

Day Time (0700 - 1900hrs on normal weekdays)

Location: M7e - International Finance Centre (Eastern End of Podium) (Reference Station)

Date	Time	Weather	Measurement Noise Level			Baseline Level	Construction Noise Level	Limit Level
			Leq	L10	L90	Leq	Leq	Leq
Unit: dB(A), (30-min)								
28/2/2017	08:05	Cloudy	64.5	65.5	62.0	67	65	N/A
7/3/2017	08:00	Fine	66.0	67.5	64.5	67	66	N/A
14/3/2017	09:45	Cloudy	66.9	68.5	64.0	67	50	N/A
21/3/2017	08:30	Fine	65.5	66.5	63.0	67	66	N/A

Location: M7w - International Finance Centre (Western End of Podium)

Date	Time	Weather	Measurement Noise Level			Baseline Level	Construction Noise Level	Limit Level
			Leq	L10	L90	Leq	Leq	Leq
Unit: dB(A), (30-min)								
28/2/2017	08:45	Cloudy	62.0	65.5	60.0	69	62	75
7/3/2017	08:45	Fine	63.5	64.5	62.5	69	64	75
14/3/2017	10:30	Cloudy	65.2	66.5	62.5	69	65	75
21/3/2017	09:35	Fine	63.5	64.5	61.0	69	64	75

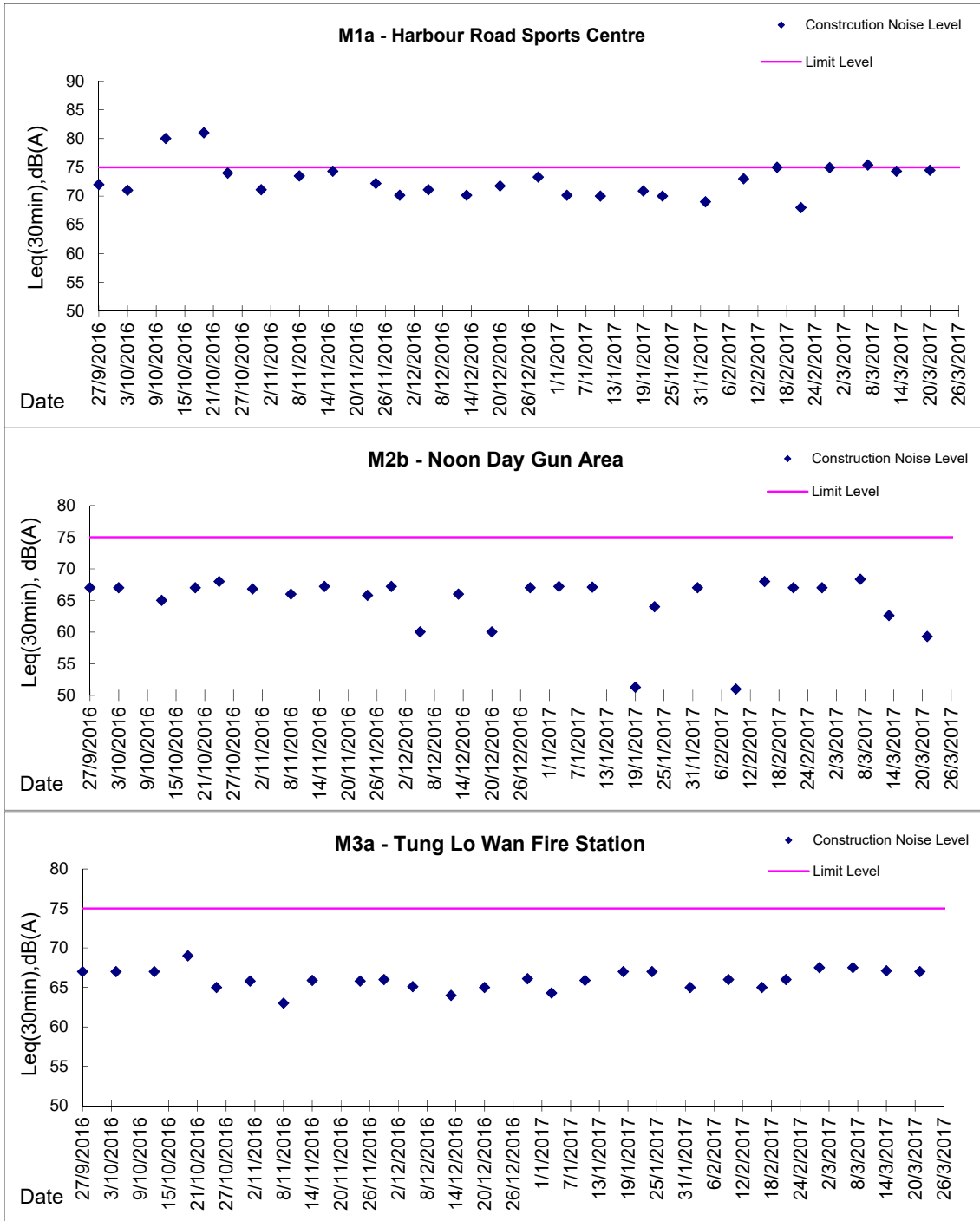
Location: M8 - City Hall

Date	Time	Weather	Measurement Noise Level			Baseline Level	Construction Noise Level	Limit Level
			Leq	L10	L90	Leq	Leq	Leq
Unit: dB(A), (30-min)								
28/2/2017	09:20	Cloudy	60.0	62.5	58.5	64	60	70
7/3/2017	09:30	Fine	58.5	60.5	57.0	64	59	70
14/3/2017	11:28	Cloudy	62.5	64.5	57.5	64	63	70
21/3/2017	10:35	Fine	62.0	63.0	58.5	64	62	70



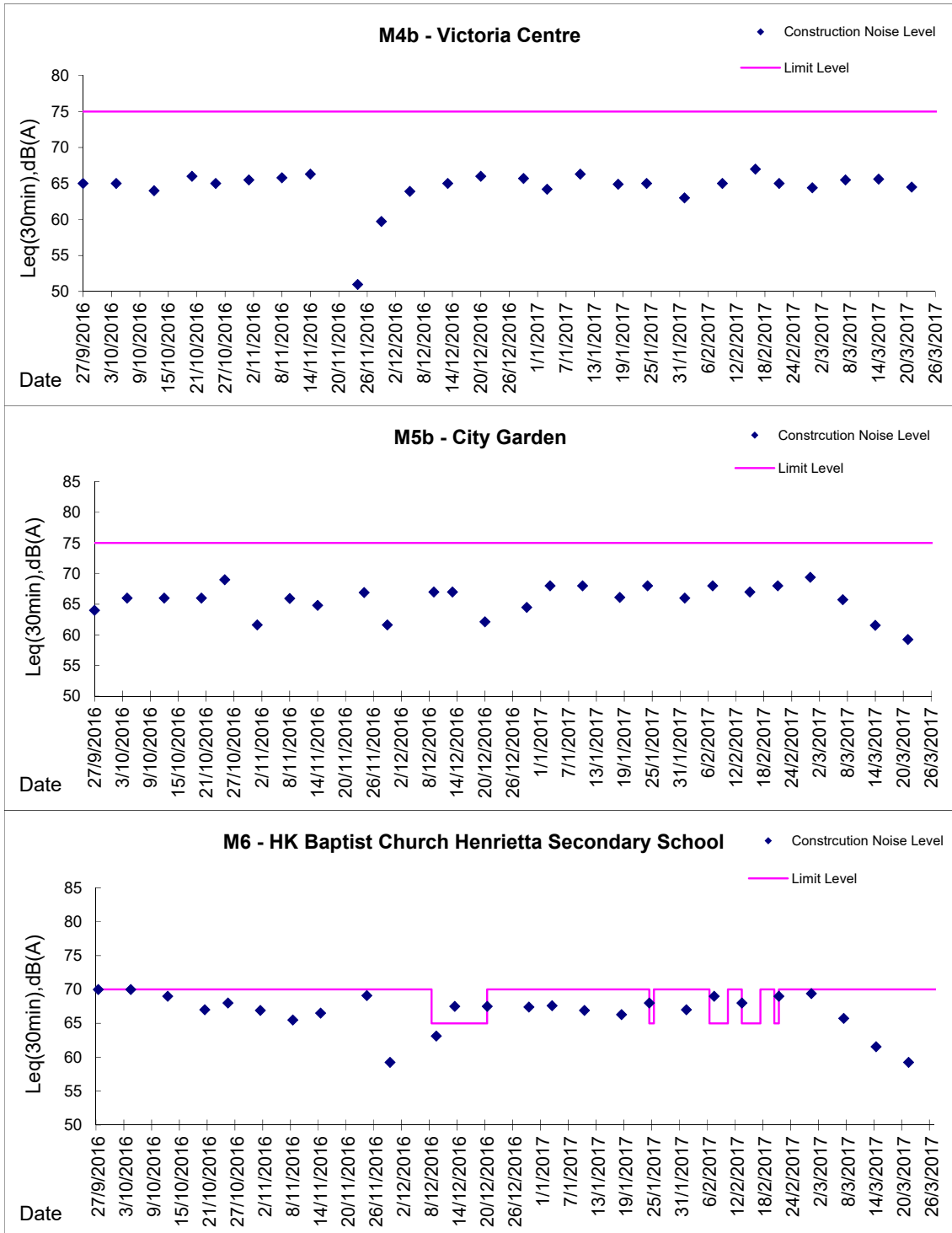
Graphic Presentation of Noise Monitoring Result

Day Time (0700 - 1900hrs on normal weekdays)



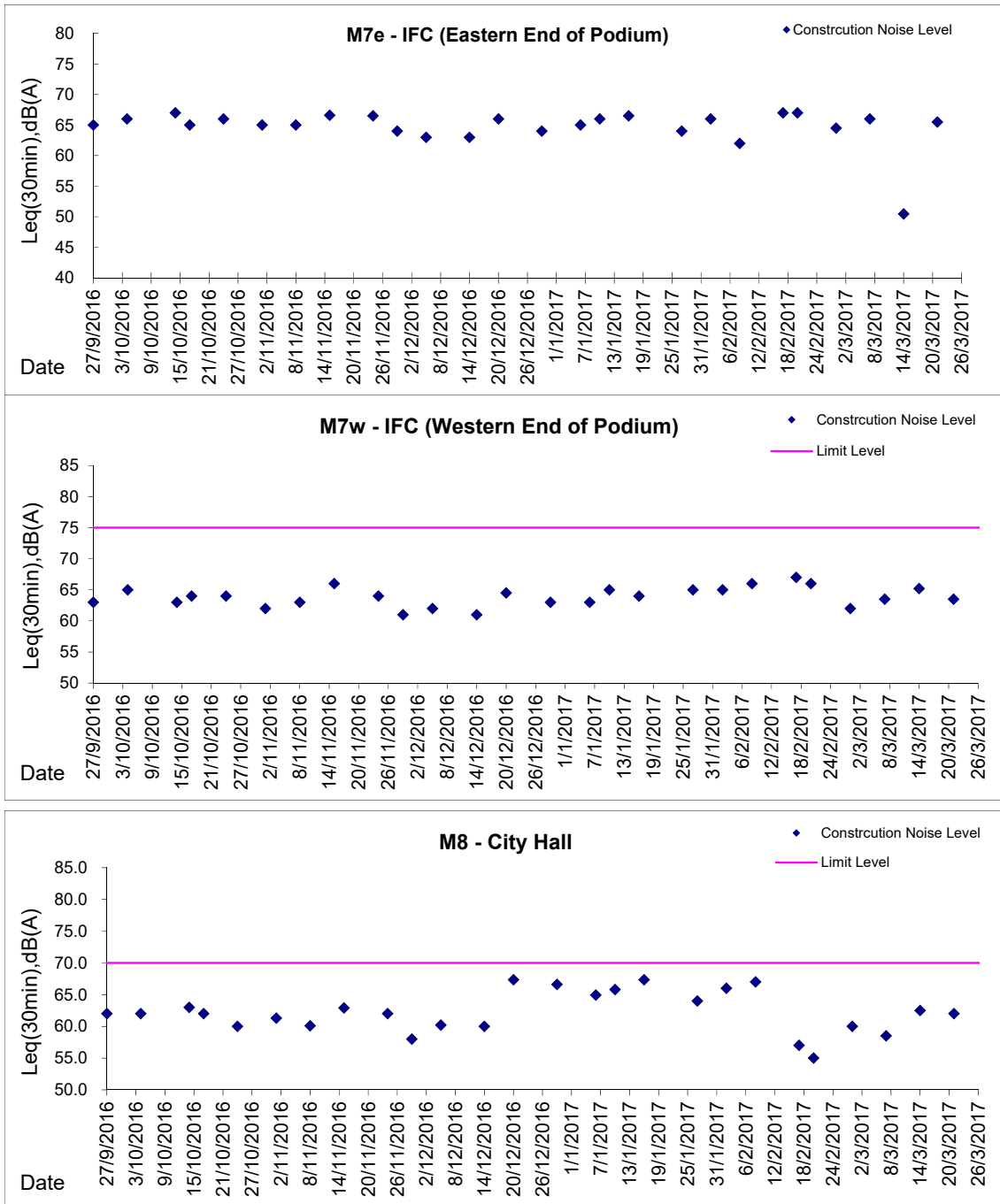
Graphic Presentation of Noise Monitoring Result

Day Time (0700 - 1900hrs on normal weekdays)



Graphic Presentation of Noise Monitoring Result

Day Time (0700 - 1900hrs on normal weekdays)



* Remark: M7e - IFC (Eastern End of Podium) is a reference monitoring station